



HOT WATER BOTTLE COZY: With Duplicate Stitched Heart

Instructions for duplicate stitching a heart onto your Churchmouse At Home 'Hot Water Bottle Cozy'.

Finished Size: Heart motif measures approx. 5"/12.5cm wide x 3¾"/9.5cm tall; centered on front of cozy.

Yarn: 1 skein Rowan *Kid Classic* (153 yds/140m each). Or approx. 20 yds/18m of an equivalent worsted-weight yarn in contrasting color (CC) for heart.

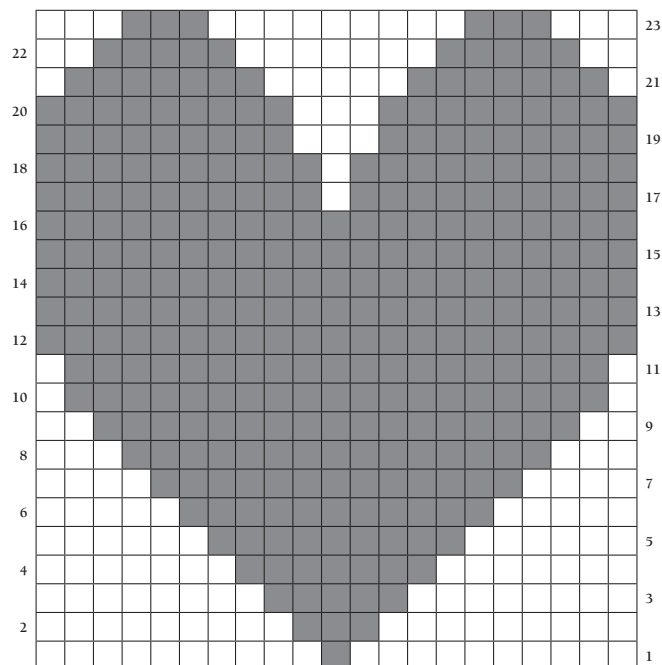
Notions: 2 locking markers. Darning needle.

*Please refer to the original pattern for complete instructions.
Only changes are covered in this adaptation.*

Position heart: Starting from first cable cast-on st after ribbed flap, count 22 sts towards center of cozy; mark st with locking marker. Following this column of sts, measure up 4½"/11.5cm, mark this stitch. This marked stitch will be your first duplicate stitch worked.

Duplicate stitch: Using chart at right, beginning with Row 1, work duplicate stitch as follows:

Thread 1 yd/m of yarn onto darning needle (darner). Leaving 8"/20cm tail, *bring darner from back to front of work through bottom of 'V' stitch; draw yarn up. Insert darner behind stitch directly above stitch being duplicated, then insert needle to back of work through bottom of 'V' stitch where you started; draw yarn up. [1 duplicate st made]* Repeat between * * working left to right for even rows and right to left for odd rows. Work top



lobes of heart separately to avoid long floats on wrong side. Rethread darner as necessary. *Note: Take care to match tension of duplicate sts to original sts so work isn't loose or pulls in.*

Weave in ends as invisibly as possible. Block as directed in original pattern.

© 2019 Churchmouse Yarns & Teas