



## SCOTTIE CHART

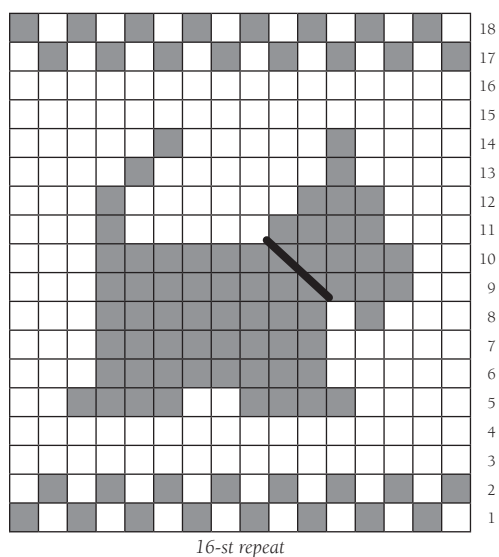
*We're in love with this adorable wee Scottie pup charted by our Celtophile friend, Sandy Blue!*

### Where to use colorwork charts:

We've used charts on our Churchmouse At Home and Classics patterns, such as our 'Hot Water Bottle Cozy,' 'Basic Christmas Stockings,' 'Turkish Bed Socks,' 'Colorwork Cuffs and Mittens,' and tea cozies. Other ideas for motif placement include stockinette-stitch areas on scarves, sock cuffs, and hats.

### How to use colorwork charts:

You can use the whole chart or just parts of a chart. You can add one solo motif or repeat the motif. You can create an all-over pattern or create a border. While we've used shaded boxes for the motif stitches and white boxes for the background, remember that you can also use a dark background and a light motif yarn. You can turn your Scotties into Westies!



We prefer knitting in the round when using charts, so our chart rows are always numbered up the right side. If your project is knit flat, read Row 1 (and all subsequent right-side, odd-numbered rows) from the right; read all even-numbered, wrong-side rows from the left.

If you are working the chart as stranded colorwork, be sure to keep your floats nice and loose across the back. When inserting a band of colorwork into an otherwise plain piece, we often use a needle one size larger than our gauge needle. Once chart rows are complete, remember to change back to smaller needles. Blocking will help even up your stitches.

### Working with this Scottie chart:

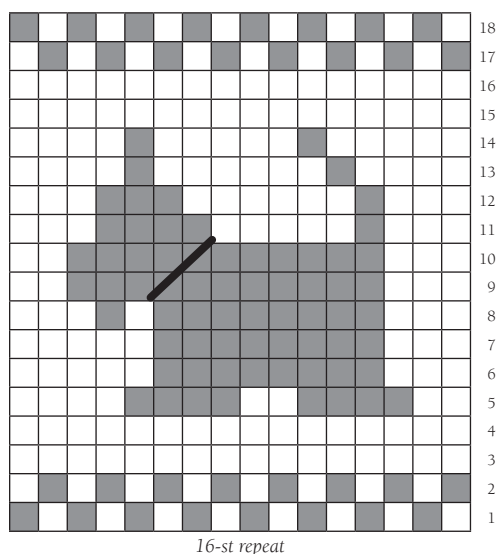
As you plan your project, be aware of which way up you want your finished motif to sit. This chart has a definite "right side up" and is worked from bottom to top, so it won't work for a top-down sweater or sock cuff—unless you want to train your Scotties to stand on their heads!

We've offered the Scottie facing left or right, so you can place your Scotties facing each other back to back or marching smartly in a row. For the collars, take a couple of long stitches or add a bow if you like.

The circumference or width of your project needs to be a multiple of 16 stitches to work this chart. If it's not, you can adjust the number of plain stitches between Scotties; just be sure your total is an even number for the checkerboard borders. If more adjustment than this is required, you can increase or decrease a few stitches (evenly spaced) to tweak your stitch count. If more adjustment than this is needed, you may want to choose a different chart.

### Placing this Scottie chart in our 'Hot Water Bottle Cozy' pattern:

Follow our pattern and work as written until body section measures 5". On the last round, change to needles one size larger than gauge needles and decrease 4 stitches evenly spaced. Work chart Rounds 1–18, working the 16-stitch repeat five times. Change back to smaller needles and MC; complete as written.



© 2014 Churchmouse Yarns & Teas