



HEARTS CHART

Even newer knitters enjoy using the simple two-color charted motifs found in traditional Northern European knitting designs. Knitting one into a stockinette-stitch project is a fun way to add a little pizzazz. Or you can work your chart in duplicate or cross-stitch after the fact to spiff up your own or store-bought knitted items. The possibilities are endless! You can even use charts for tiny cross-stitch on linen.

Where to use colorwork charts:

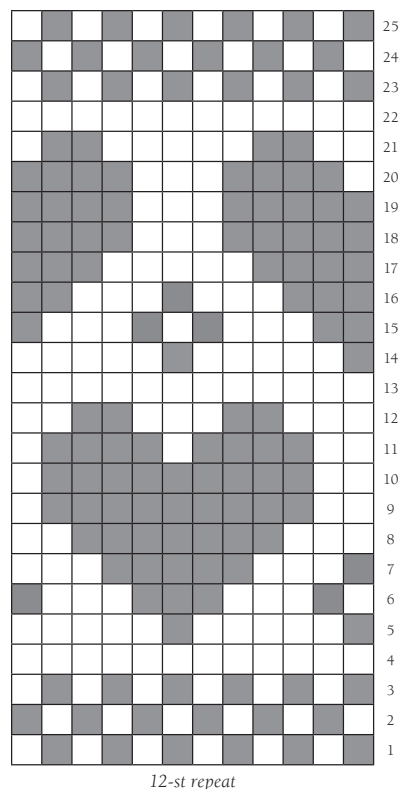
We've used charts on our Churchmouse At Home and Classics patterns, such as our 'Hot Water Bottle Cozy,' 'Basic Christmas Stockings,' 'Turkish Bed Socks,' 'Colorwork Cuffs and Mittens,' and tea cozies. Other ideas for motif placement include stockinette-stitch areas on scarves and cowls, toe-up sock cuffs, and hats.

How to use colorwork charts:

You can use the whole chart or just parts of a chart. You can add one solo motif or repeat the motif. You can create an all-over pattern or create a border. While we've used shaded boxes for the motif stitches and white boxes for the background, remember that you can also use a dark background and a light motif yarn.

We prefer knitting in the round when using charts, so our chart rows are always numbered up the right side. If your project is knit flat, read Row 1 (and all subsequent right-side, odd-numbered rows) from the right; read all even-numbered, wrong-side rows from the left.

If you are working the chart as stranded colorwork, be sure to keep your floats nice and loose across the back. When inserting a band of colorwork into an otherwise plain piece, we often use a needle one size larger than our gauge needle. Once chart rows are complete, remember to change back to smaller needles. Blocking afterwards will help even up your stitches.



☐ Knit with MC ■ Knit with CC

Working with this Hearts chart:

As you plan your project, be aware of which way up you want your finished motif to sit. This chart has a "right side up" and is worked from bottom to top, so it won't work for a top-down sweater or sock cuff.

We've shown our chart with two bands of hearts. You can do just one band of hearts or add multiple bands (always keep one plain row between bands of hearts). You can also add or subtract checkerboard rows if you like.

The circumference or width of your project needs to be a multiple of 12 stitches to work this chart. If it's not, you can increase or decrease approximately ½–1" worth of stitches (total number of stitches will depend on your gauge) evenly spaced to tweak your stitch count before you begin charted rounds. If more adjustment than this is required, you may want to choose a different chart.

Placing this chart in our 'Hot Water Bottle Cozy' pattern:

Work original pattern until body section measures 5". On the last round, change to needles one size larger. Work chart rounds 1–25, working the 12-stitch repeat seven times. Change back to smaller needles and complete pattern as written.

© 2014 Churchmouse Yarns & Teas