



## BIG DIAMOND COLORWORK COWL in Rowan *Brushed Fleece*

*This simple colorwork pattern is easy to memorize and pretty quick to knit! Rowan's Brushed Fleece yarn makes a warm dense fabric that still feels lightweight.*

- Finished Size:** Approx. 24"/61cm around x 10"/25cm deep, after blocking.
- Yarn:** 2 skeins Rowan *Brushed Fleece* (115 yds/105m each); 1 skein each in 2 colors. Designate Main Color (MC) and Contrast Color (CC).  
Or approx. 115 yds/105m each in two colors of an equivalent chunky-weight yarn.
- Needles & Notions:** US 10 (6mm) 24"/60cm circular needle, or size to obtain gauge.  
US 9 (5.5mm) 24"/60cm circular needle, or one size smaller than gauge needle.  
Stitch marker. Darning needle to finish.
- Gauge:** Approx. 14 sts/18 rounds = 4"/10cm in colorwork stitch, after blocking.

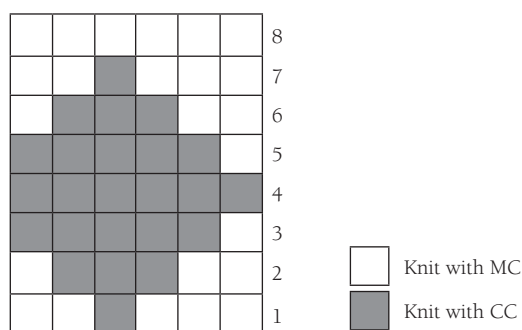
---

**Cast on:** With MC and smaller needle, using long-tail cast-on method, cast on 84 stitches. Do not join in the round yet.

**First edging:** Row 1: Purl to end. Join in round, being careful not to twist, and place marker to designate beginning of round. On subsequent rounds, slip marker as you come to it.  
Purl 2 rounds.

**Colorwork sequence:** Change to gauge needle, and knit one round.  
Join CC and work Rounds 1–8 of Diamond Colorwork chart five times. *Tip: Take care to strand floats evenly across back of work. To keep floats loose, stretch out stitches of last color on right needle before bringing your new color across the back.*

**Diamond Colorwork Chart**



6-st repeat; read chart from right to left every round.

**Second edging:** Change to smaller needle and purl 3 rounds.

**Bind off:** Bind off purlwise, matching tension of cast-on edge. Weave in ends on wrong side.

**Finishing:** Soak cowl for 20 minutes in tepid water with a little no-rinse wool soap. Gently squeeze out as much water as possible. Roll in towel to squeeze out more moisture. Lay cowl on moisture-safe surface, gently pulling to desired dimensions. Allow to dry completely.

© 2021 Churchmouse Yarns & Teas